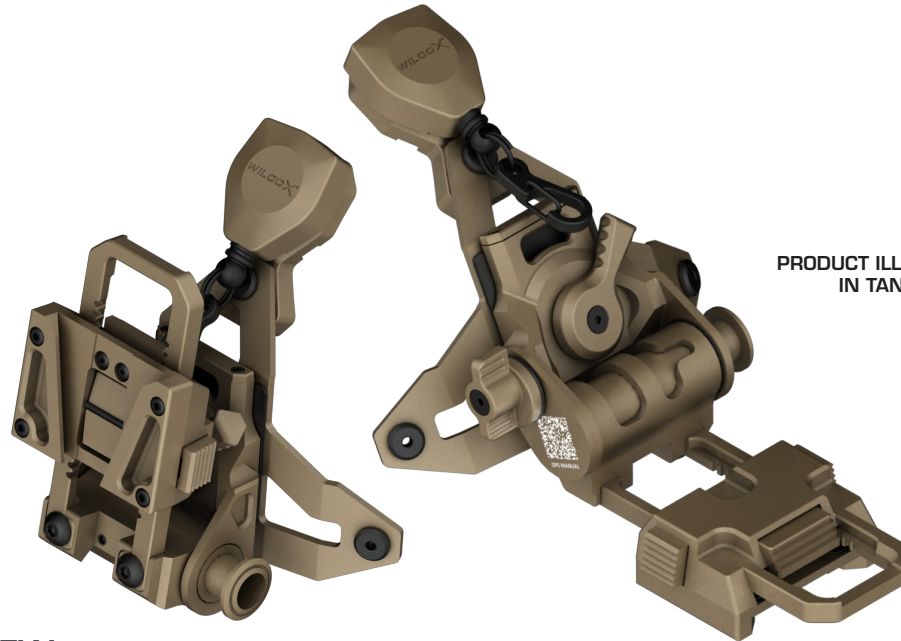


G69™

EXTENDED LIGHTWEIGHT FIXED NIGHT VISION GOGGLE MOUNT



PRODUCT ILLUSTRATED
IN TAN (-T)

PRODUCT OVERVIEW

The Wilcox G69 Extended Lightweight Helmet Mount with Lanyard has become an NVG industry standard. The G69 is a permanently fixed solution that securely locks the NVG onto any helmet drilled with a standard three-hole configuration. It is lightweight and provides greater horizontal travel for use with a wide array of protective masks, bridges, and NVGs.

NVG COMPATIBILITY

- AN/PVS-15, AN/PVS-18, AN/PVS-31/BNVD, GPNVG-18 (Dovetail), AN/PSQ-36 FGS (Dovetail)

Other NVG/thermal devices are compatible but require additional accessories. Please contact [customer service](#) for more information.

SPECIFICATIONS

Dimensions:	12.1 cm L x 6.6 cm W x 9.7 cm H (4.75" L x 2.58" W x 3.80" H)
Weight:	142 g (5.0 oz)
Vertical Height Adjustment:	0.90"
Fore/Aft Travel:	1.35"

FEATURES AND BENEFITS

- Lightweight Lo-Pro mount, shroud, and lanyard solution
- Mounts onto any helmet drilled with three-hole pattern
- Reduction of material with increased strength to weight ratio
- Greater horizontal travel for use with a wide array of protective masks, bridges, and NVGs
- Permanent low profile design to the helmet
- 5 Year Standard Limited Warranty

Available Colors: -T -B

PRODUCT DESCRIPTION	PART NUMBER
G69 MOUNT W/LANYARD	28300G69

Approved for Public Release

